

# ROTHKO

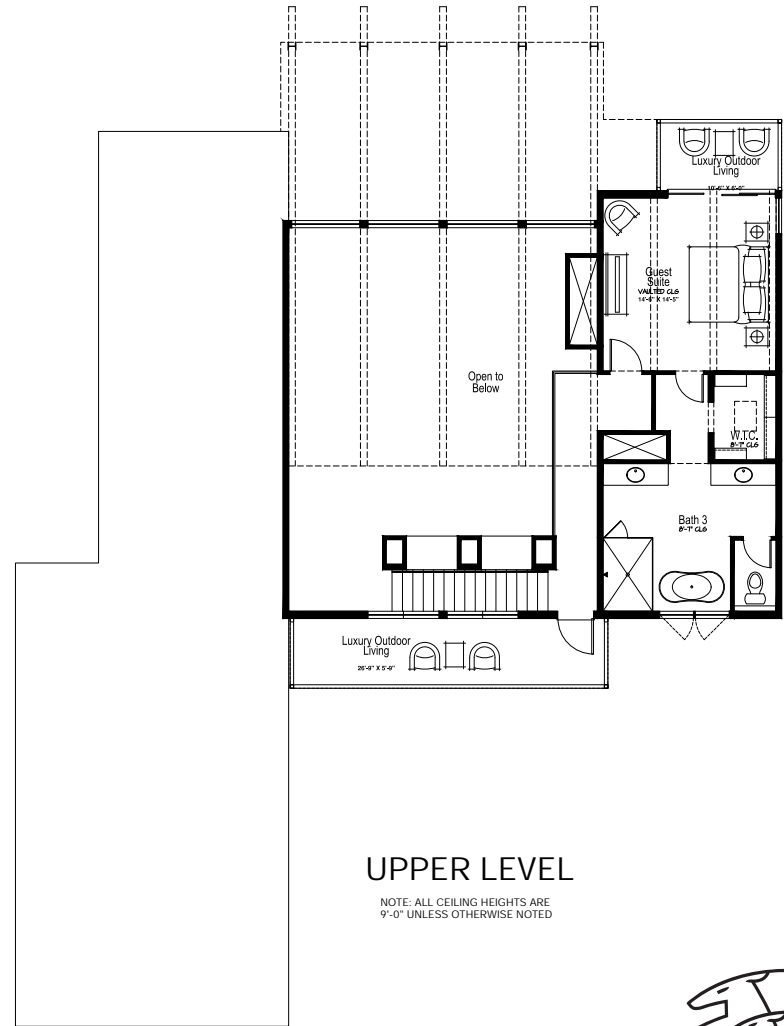
2,816 SQ. FT. (APPROX.)  
4 EN SUITES | 3.5 BATHS



## MAIN LEVEL

NOTE: ALL CEILING HEIGHTS ARE 9'-0" UNLESS OTHERWISE NOTED

NOTE: GARAGE DOOR LOCATION BASED ON SITE CONDITIONS



## UPPER LEVEL

NOTE: ALL CEILING HEIGHTS ARE 9'-0" UNLESS OTHERWISE NOTED

NOTE: SQUARE FOOTAGES ARE APPROXIMATE AND STATED IN TERMS OF GROSS SQUARE FEET. ALL PRICES, INCENTIVES LOCATIONS DESCRIPTIONS OPTIONS, AND TERMS ARE SUBJECT TO CHANGE WITHOUT NOTICE. FURNITURE NOT INCLUDED. THIS INFORMATION IS NOT INTENDED TO CONSTITUTE AN OFFER OR SOLICITATION

