

LEGEND

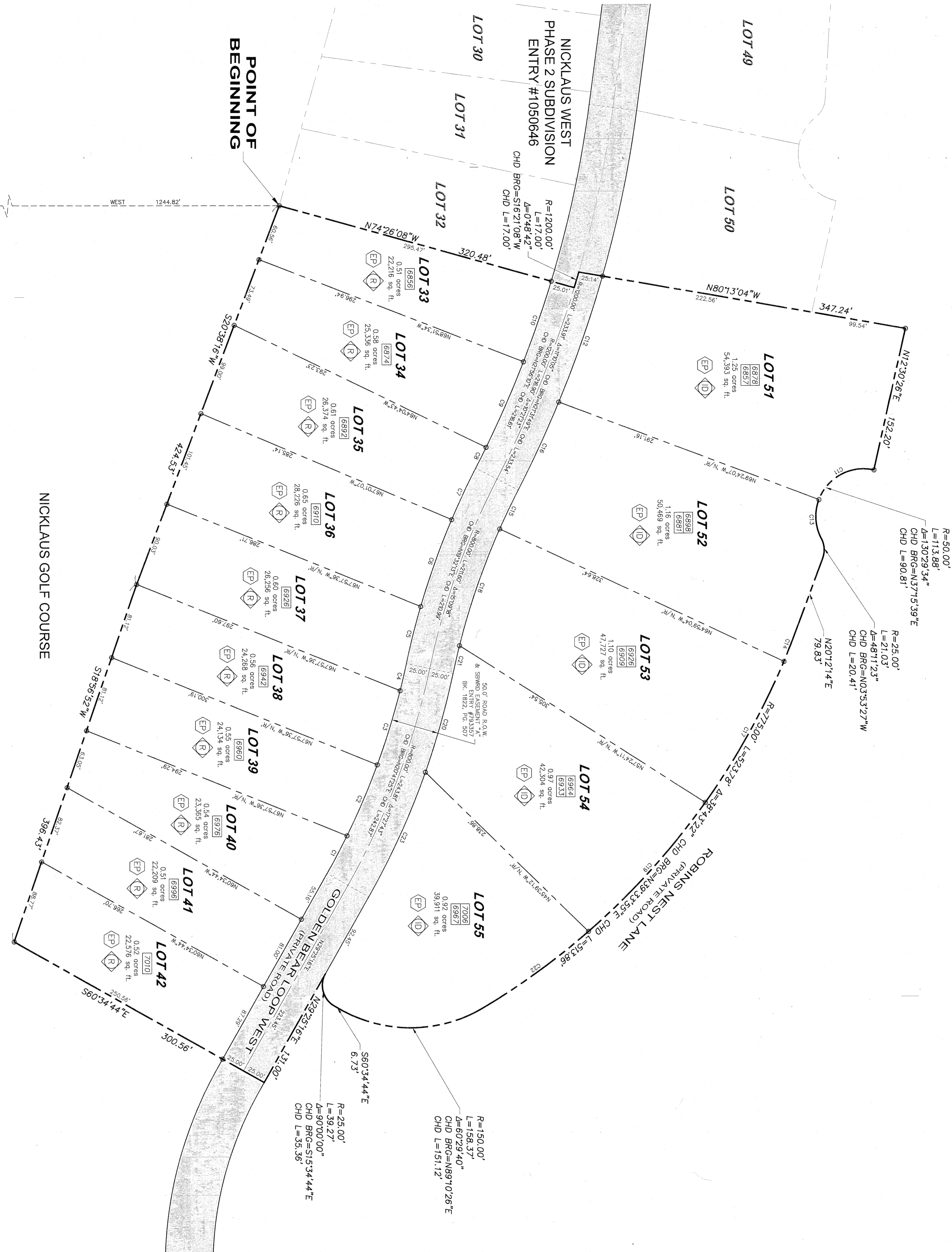
- 2 1 1 FOUND SECTION CORNER
- 1 1 1 1 2 FOUND SECTION CORNER
- BOUNDARY CORNERS (5/8" REBAR WITH CAP)
- NON-RADIAL
- REPORT UNIT, NOTE 12. LOTS 33-42 & 51-55 MAY REQUIRE A PRIVATELY OWNED AND OPERATED MASTER/SLAVE WASTEWATER SERVICE. SEE GENERAL NOTE #25.
- INCENTIVE DENSITY LOT. SEE GENERAL NOTE 11.
- 5.56 AC LOT ACRES
- LOT 1 LOT NUMBER
- 0000 STREET ADDRESS
- SWMO EASEMENT

ADDRESS TABLE

LOT	STREET ADDRESS
33	6956 Golden Bear Loop W
34	6974 Golden Bear Loop W
35	6992 Golden Bear Loop W
36	6928 Golden Bear Loop W
37	6928 Golden Bear Loop W
38	6942 Golden Bear Loop W
39	6960 Golden Bear Loop W
40	6976 Golden Bear Loop W
41	6996 Golden Bear Loop W
42	6996 Golden Bear Loop W
51	6957 Golden Bear Loop W
52	6978 Robins Nest Lane W
53	6998 Robins Nest Lane W
54	6978 Robins Nest Lane W
54	6984 Robins Nest Lane W
55	6967 Golden Bear Loop W
55	7009 Robins Nest Lane

CURVE TABLE

CURVE	RADIUS	LENGTH	DELTA	CH BEARING	CH DIST
C1	775.00'	44.87'	318.09°	N27°46'12"E	44.86'
C2	775.00'	81.05'	599.32°	N23°07'22"E	81.01'
C3	775.00'	81.34'	670°48'	N17°07'12"E	81.30'
C4	775.00'	29.14'	270°14'	N13°02'11"E	29.13'
C5	825.00'	61.83'	417.78°	N14°08'23"E	61.82'
C6	825.00'	98.87'	6°43'40"	N19°37'03"E	98.82'
C7	825.00'	59.51'	470°59'	N25°02'52"E	59.50'
C8	1175.00'	24.47'	111°35'	N26°31'04"E	24.47'
C9	1175.00'	88.34'	4°46'51"	N23°31'51"E	88.02'
C10	1175.00'	88.34'	4°21'25"	N18°57'43"E	88.33'
C11	30.00'	71.48'	81°54'32"	N61°33'10"E	65.55'
C12	1225.00'	139.87'	6°32'32"	S19°05'28"W	139.80'
C13	50.00'	42.40'	48°35'02"	N34°13'38"W	41.14'
C14	775.00'	35.89'	2°39'12"	N21°31'51"E	35.89'
C15	775.00'	45.32'	3°11'03"	S25°26'21"W	45.32'
C16	1225.00'	101.81'	4°40'08"	S24°44'18"W	101.58'
C17	775.00'	169.73'	12°32'54"	N29°07'54"E	169.39'
C18	775.00'	129.51'	9°34'29"	S18°58'35"W	129.36'
C19	775.00'	182.93'	13°31'27"	N42°10'04"E	182.91'
C20	825.00'	107.63'	7°28'29"	S15°41'48"W	107.55'
C21	775.00'	30.16'	21°3'46"	S13°04'27"W	30.16'
C22	775.00'	135.22'	9°59'48"	N33°55'42"E	135.05'
C23	825.00'	143.81'	9°59'14"	S24°25'39"W	143.82'

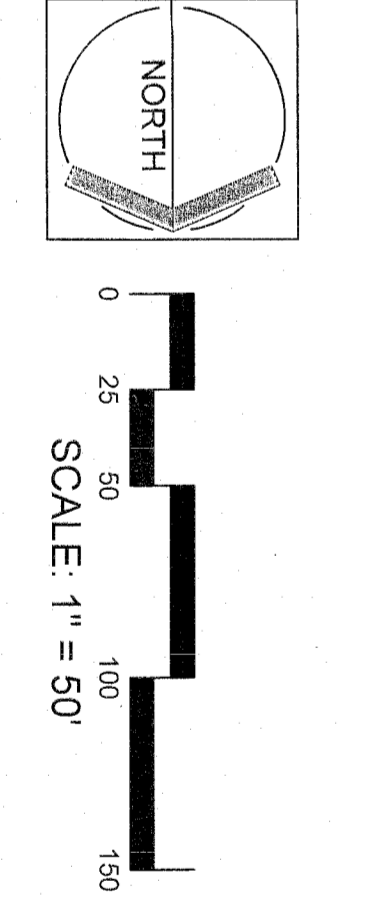


S.E. COR. SEC. 13,
T.1S., R.4E., S.L.B.&M.
FOUND STONE

N.E. COR. SEC. 13,
T.1S., R.4E., S.L.B.&M.
FOUND STONE

24.13
19.18
N00°35'51"W 1145.30'
WEST 1244.82'

13.12
18.7
S00°35'51"E 531.17'
SOUTH EAST COR. OF SECTION 13



PROMONTORY
NICKLAUS WEST PHASE 4
SUBDIVISION

PROMONTORY NICKLAUS WEST PH 4 SUB (3 OF 3)

Park City Surveying
 HO. Lic. 682993
 T. S. R. 4 E. S. L. B. & M.
 (435) 969-4637 Lic.

RECORDED
 ENTRY NO. 108826
 STATE OF UTAH COUNTY OF SUMMIT
 DATE 2/16/2018 TIME 1:16 PM
 RECORDED AND FILED AT THE REQUEST OF:
Promontory Investments LLC
 A Willing & Dwyer Company
 January 10, 2018

POINT OF BEGINNING

NICKLAUS GOLF COURSE

PHASE 2 SUBDIVISION
 ENTRY #1050646

SHEET 3 OF 3