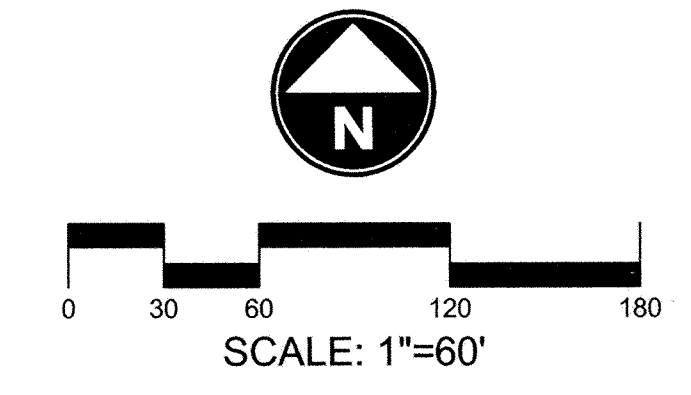


2 1
11 12



- SYMBOLS LEGEND**
- SECTION CORNER
 - STANDARD STREET MONUMENT (SET OR TO BE SET)
 - BOUNDARY CORNERS (5/8" IRON PIPE WITH CAP)
 - LOT** LOT NUMBER
 - STREET ADDRESS

- NOTES**
1. ALL OTHER PROPERTY CORNERS AND LOT CORNERS SHALL BE 5/8" IRON PIPE WITH CAP, U.N.O.
 2. THIS PLAT IS A FOUR (4) SHEET PACKAGE. INFORMATION DEPICTED ON ANY ONE SHEET SHALL APPLY TO ALL SHEETS AND LOTS.
 3. THE LOW PRESSURE WASTEWATER SYSTEM DESIGN IS BASED ON THE FOLLOWING MINIMUM ELEVATIONS OF E-ONE PUMPS:
 - LOTS 10 & 11: 6847'
 - LOTS 12 & 13: 6843.5'
 - LOT 14: 6845'
 - ALL OTHER LOTS: NO ELEVATION RESTRICTIONS

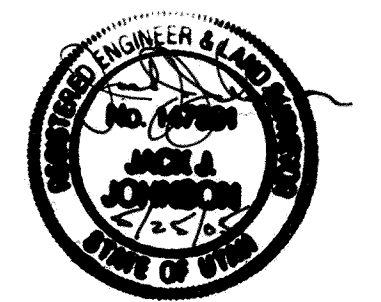


GOLF CLUB CABINS
 LOCATED IN SECTION 12,
 TOWNSHIP 1 SOUTH, RANGE 4 EAST
 SALT LAKE BASE AND MERIDIAN
 SUMMIT COUNTY, UTAH

SHEET 2 OF 4

ADDRESS TABLE

LOT	STREET ADDRESS	LOT	STREET ADDRESS
1	8535 RANCH CLUB COURT	16	8809 RANCH CLUB COURT
2	8547 RANCH CLUB COURT	17	8837 RANCH CLUB COURT
3	8569 RANCH CLUB COURT	18	8857 RANCH CLUB COURT
4	8589 RANCH CLUB COURT	19	8877 RANCH CLUB COURT
5	8603 RANCH CLUB COURT	20	8544 RANCH CLUB COURT
6	8621 RANCH CLUB COURT	21	8562 RANCH CLUB COURT
7	8641 RANCH CLUB COURT	22	8584 RANCH CLUB COURT
8	8663 RANCH CLUB COURT	23	8670 RANCH CLUB COURT
9	8683 RANCH CLUB COURT	24	8676 RANCH CLUB COURT
10	8699 RANCH CLUB COURT	25	8907 RANCH CLUB COURT
11	8715 RANCH CLUB COURT		
12	8729 RANCH CLUB COURT		
13	8749 RANCH CLUB COURT		
14	8769 RANCH CLUB COURT		
15	8787 RANCH CLUB COURT		



FINAL PLAT
 May 25, 2005

COUNTY RECORDER
 ENTRY NO. 741114 BOOK PAGE'S
 STATE OF Utah COUNTY OF Summit
 DATE 6-30-2005 TIME 16:41 FEE PAID 145.00
 RECORDED AND FILED AT THE REQUEST OF:
Pivotal Promontory Development
Alan Spriggs
 COUNTY RECORDER

JACK JOHNSON COMPANY
 Designing World Destinations
 In-Person - 1777 Sun Peak Drive - Park City - Utah 84098
 Telephone - 435.645.9000 - Facsimile - 435.649.1620
 www.jackjohnson.com

Utah State Surveyor/Professional Engineer 10077102, State of Utah, License No. 10077102, Exp. 12/31/05, State of Utah, License No. 10077102, Exp. 12/31/05, State of Utah, License No. 10077102, Exp. 12/31/05.

11 12
14 13

SOUTHWEST COR. SEC. 12,
 T.1S., R.4E., S.L.B.&M.
 FOUND REBAR

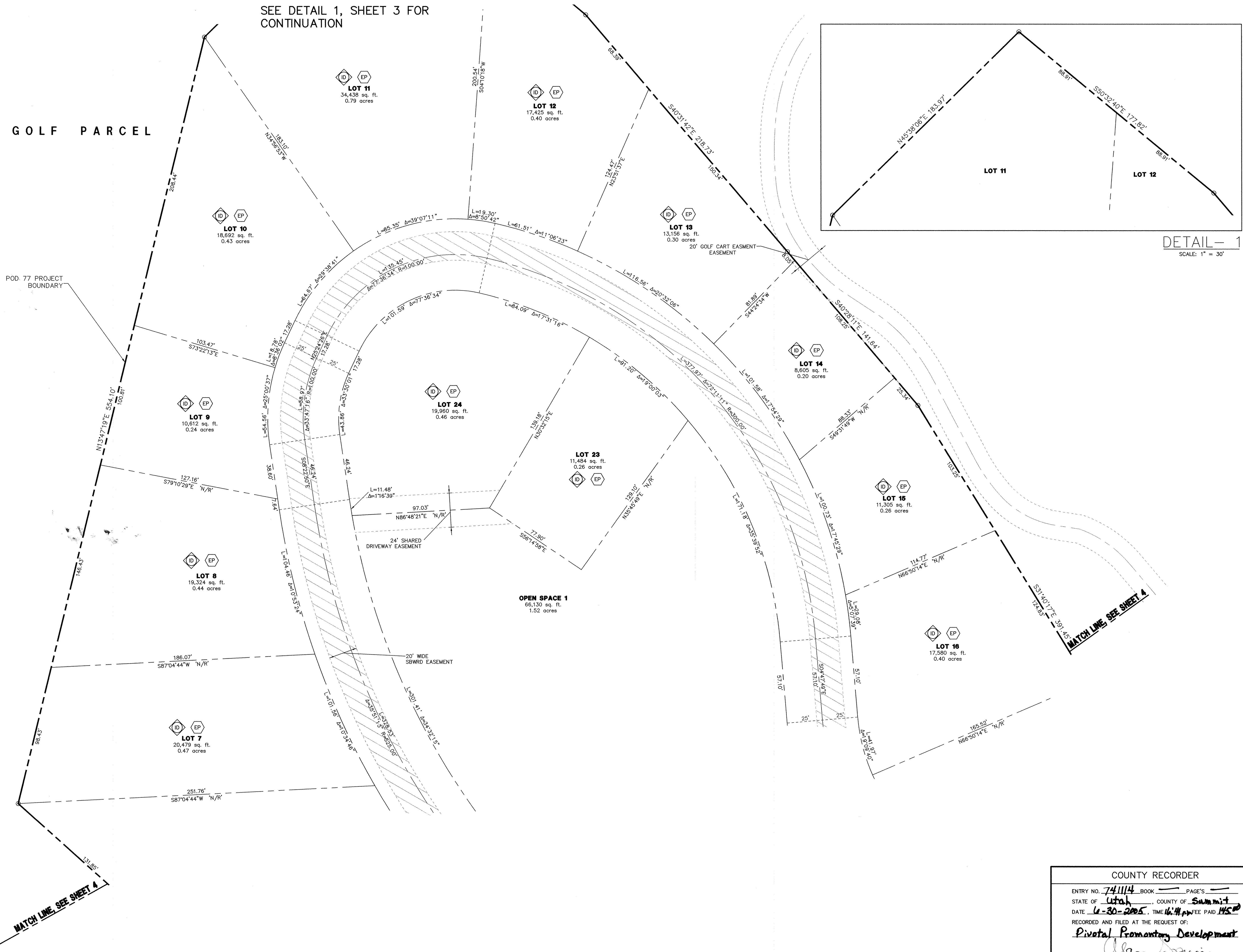
(BASIS OF BEARING BETWEEN THE SOUTHWEST COR. AND THE SOUTHEAST COR. OF SECTION 12)
BASIS OF BEARING

SOUTHEAST COR. SEC. 12,
 T.1S., R.4E., S.L.B.&M.
 FOUND STONE

12 7
13 18

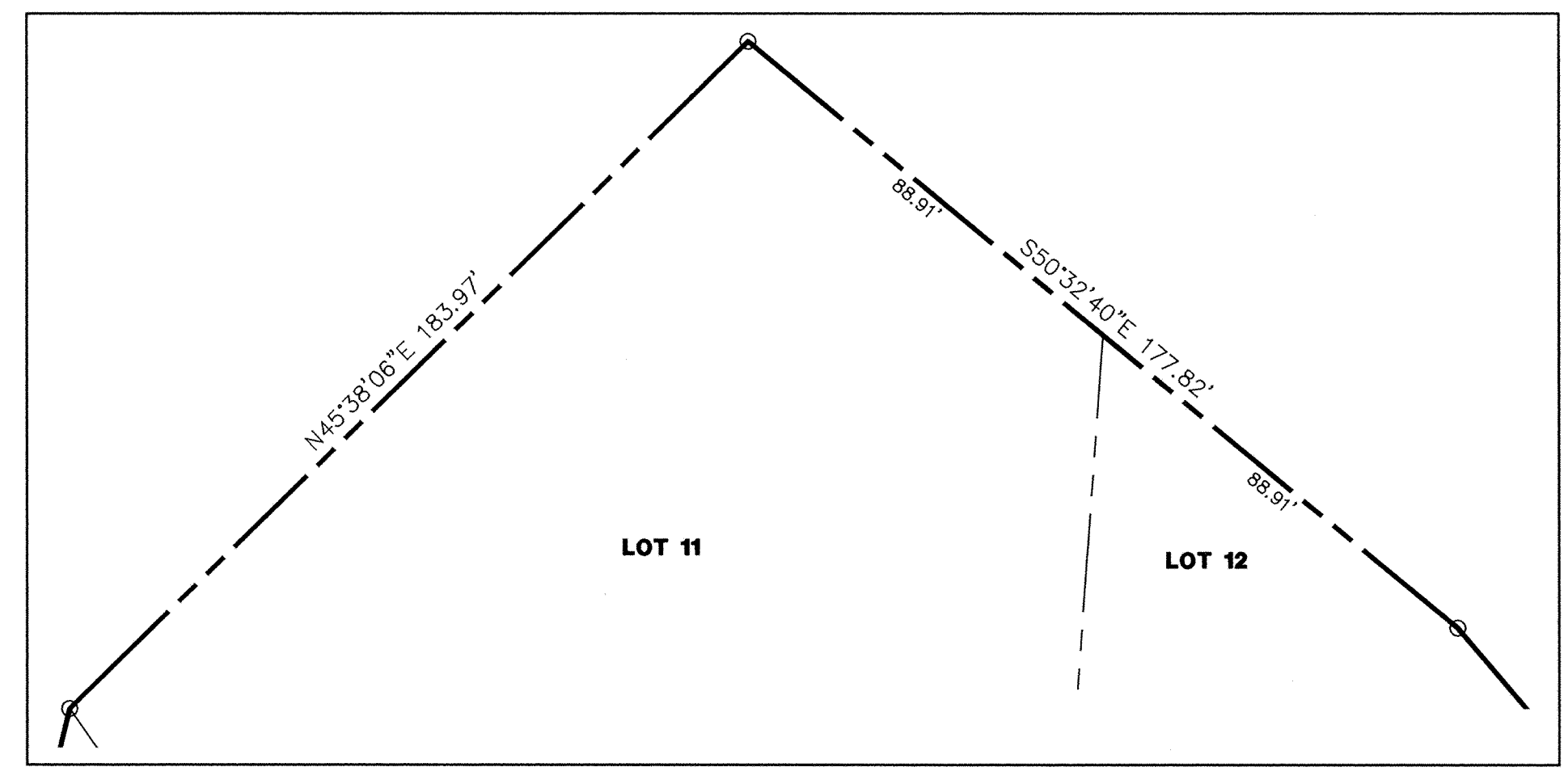
SEE DETAIL 1, SHEET 3 FOR CONTINUATION

GOLF PARCEL



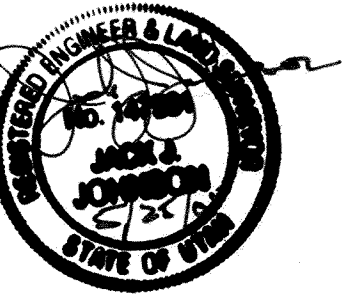
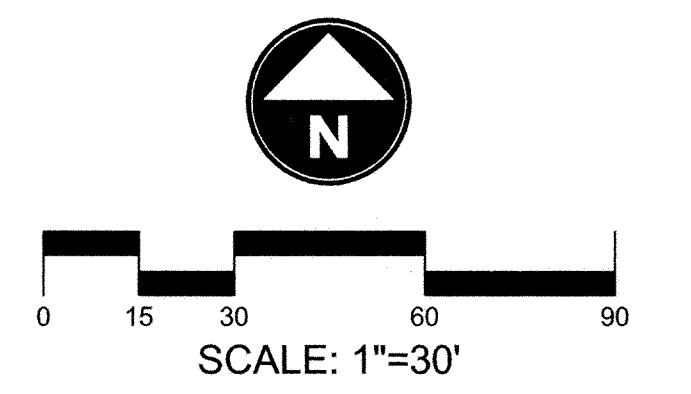
MATCH LINE SEE SHEET 4

MATCH LINE SEE SHEET 4



- SYMBOLS LEGEND**
- SECTION CORNER
 - STANDARD STREET MONUMENT (SET OR TO BE SET)
 - BOUNDARY CORNERS (5/8" IRON PIPE WITH CAP)
 - E-ONE TYPE SEWAGE EJECTOR PUMP SHALL BE REQUIRED. SEE GENERAL NOTE 26.
 - INCENTIVE DENSITY LOT, LOT NUMBER
 - NON-RADIAL
 - INDICATES 20' SBWRD EASEMENT
 - INDICATES 30' FIRE ACCESS EASEMENT
 - INDICATES 30' SHARED DRIVEWAY EASEMENT

- NOTES**
1. ALL OTHER PROPERTY CORNERS AND LOT CORNERS SHALL BE 5/8" IRON PIPE WITH CAP, U.N.O.
 2. ALL ROADWAY CENTERLINE CURVES AND BEARINGS ARE RADIAL OR TANGENT, U.N.O.
 3. ALL LOT LINES ARE PERPENDICULAR AND/OR RADIAL TO ROADWAY CENTERLINES U.N.O.
 4. INCENTIVE DENSITY LOT. SEE GENERAL NOTE 11.
 5. THIS PLAT IS A FOUR (4) SHEET PACKAGE. INFORMATION DEPICTED ON ANY ONE SHEET SHALL APPLY TO ALL SHEETS AND LOTS.
 6. SEE SHEET (2) OF (4) FOR LOT ADDRESSES.



GOLF CLUB CABINS
 LOCATED IN SECTION 12,
 TOWNSHIP 1 SOUTH, RANGE 4 EAST
 SALT LAKE BASE AND MERIDIAN
 SUMMIT COUNTY, UTAH

SHEET 3 OF 4

FINAL PLAT
 May 25, 2005

COUNTY RECORDER

ENTRY NO. 741114 BOOK PAGE'S

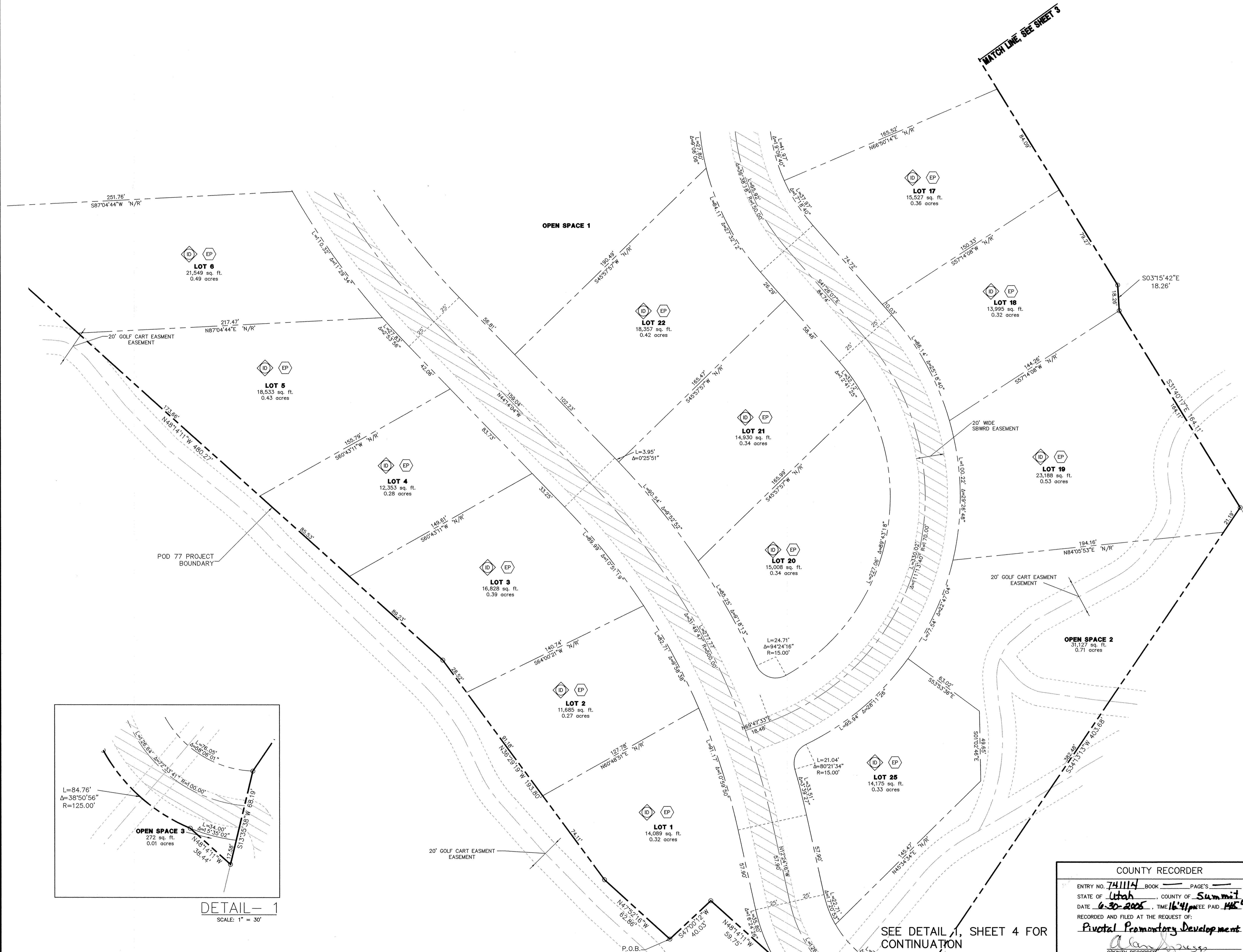
STATE OF Utah, COUNTY OF Summit

DATE 6-30-2005 TIME 6:44 PM FEE PAID 145.00

RECORDED AND FILED AT THE REQUEST OF:
Pivotal Promontory Development
Alan Cross
 COUNTY RECORDER

JACK JOHNSON COMPANY
 Designing World Destinations
 In-Person - 1777 Sun Peak Drive - Park City - Utah 84098
 Telephone - 435.645.9000 - Facsimile - 435.649.1620
 www.jackjohnson.com

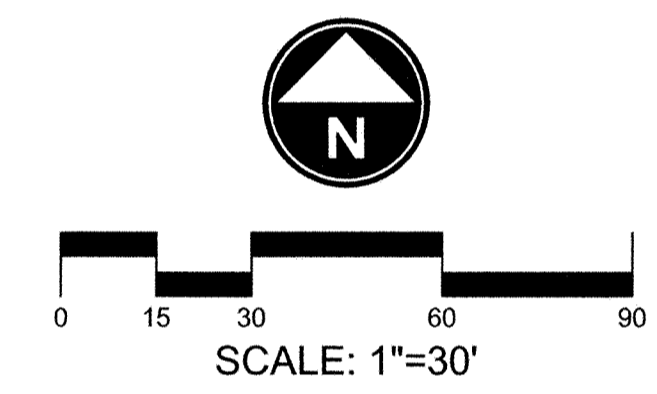
PLAT 741114 (Promontory) Revised: Final Plat 741114 (Promontory) Book 741114 Page 3 of 4
 Bureau: 435.200.7774 (Utah) | plat@jjs.com | jjs.com



SYMBOLS LEGEND

	SECTION CORNER
	STANDARD STREET MONUMENT (SET OR TO BE SET)
	BOUNDARY CORNERS (5/8" IRON PIPE WITH CAP)
	E=ONE TYPE SEWAGE EJECTOR PUMP SHALL BE REQUIRED. SEE GENERAL NOTE 26.
	INCENTIVE DENSITY LOT, SEE GENERAL NOTE 12.
LOT	LOT NUMBER
	N/R' NON-RADIAL
	INDICATES 20' SBWRD EASEMENT
	INDICATES 30' FIRE ACCESS EASEMENT
	INDICATES 30' SHARED DRIVEWAY EASEMENT

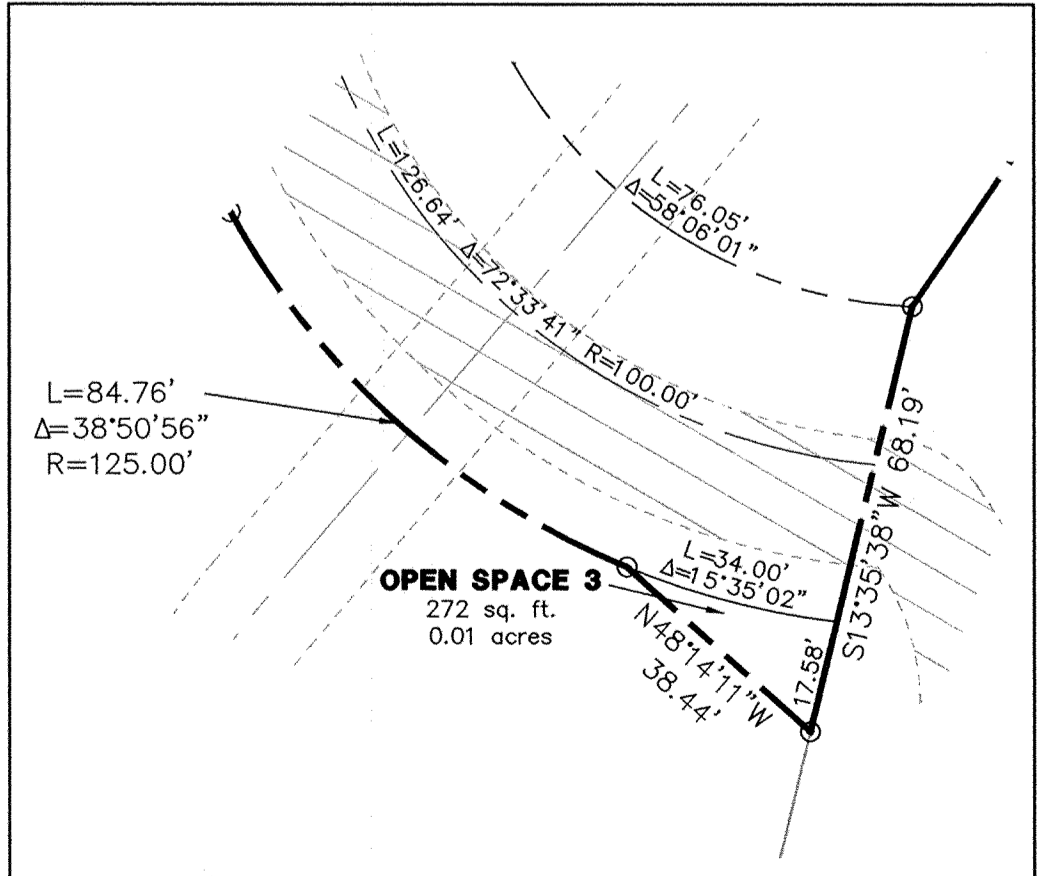
- NOTES**
1. ALL OTHER PROPERTY CORNERS AND LOT CORNERS SHALL BE 5/8" IRON PIPE WITH CAP, U.N.O.
 2. ALL ROADWAY CENTERLINE CURVES AND BEARINGS ARE RADIAL OR TANGENT, U.N.O.
 3. ALL LOT LINES ARE PERPENDICULAR AND/OR RADIAL TO ROADWAY CENTERLINES U.N.O.
 4. INCENTIVE DENSITY LOT. SEE GENERAL NOTE 11.
 5. THIS PLAT IS A FOUR (4) SHEET PACKAGE. INFORMATION DEPICTED ON ANY ONE SHEET SHALL APPLY TO ALL SHEETS AND LOTS.
 6. SEE SHEET (2) OF (4) FOR LOT ADDRESSES.



GOLF CLUB CABINS

LOCATED IN SECTION 12,
TOWNSHIP 1 SOUTH, RANGE 4 EAST
SALT LAKE BASE AND MERIDIAN
SUMMIT COUNTY, UTAH

SHEET 4 OF 4



SEE DETAIL 1, SHEET 4 FOR CONTINUATION

COUNTY RECORDER

ENTRY NO. 741114 BOOK PAGE'S

STATE OF Utah, COUNTY OF Summit

DATE 6-30-2005, TIME 16:41, FEE PAID 145.00

RECORDED AND FILED AT THE REQUEST OF:

Pivotal Promontory Development

Alan Johnson
COUNTY RECORDER

JACK JOHNSON COMPANY

Designing World Destinations

In-Person - 1777 Sun Peak Drive - Park City - Utah 84098
Telephone - 435.645.9000 - Facsimile - 435.649.1620
www.jackjohnson.com

path: X:\GIS\Inventory\Inventory\10077102.dwg
file name: 6550007102.dwg | plot date: May 25, 2005 | plotted by: BJC