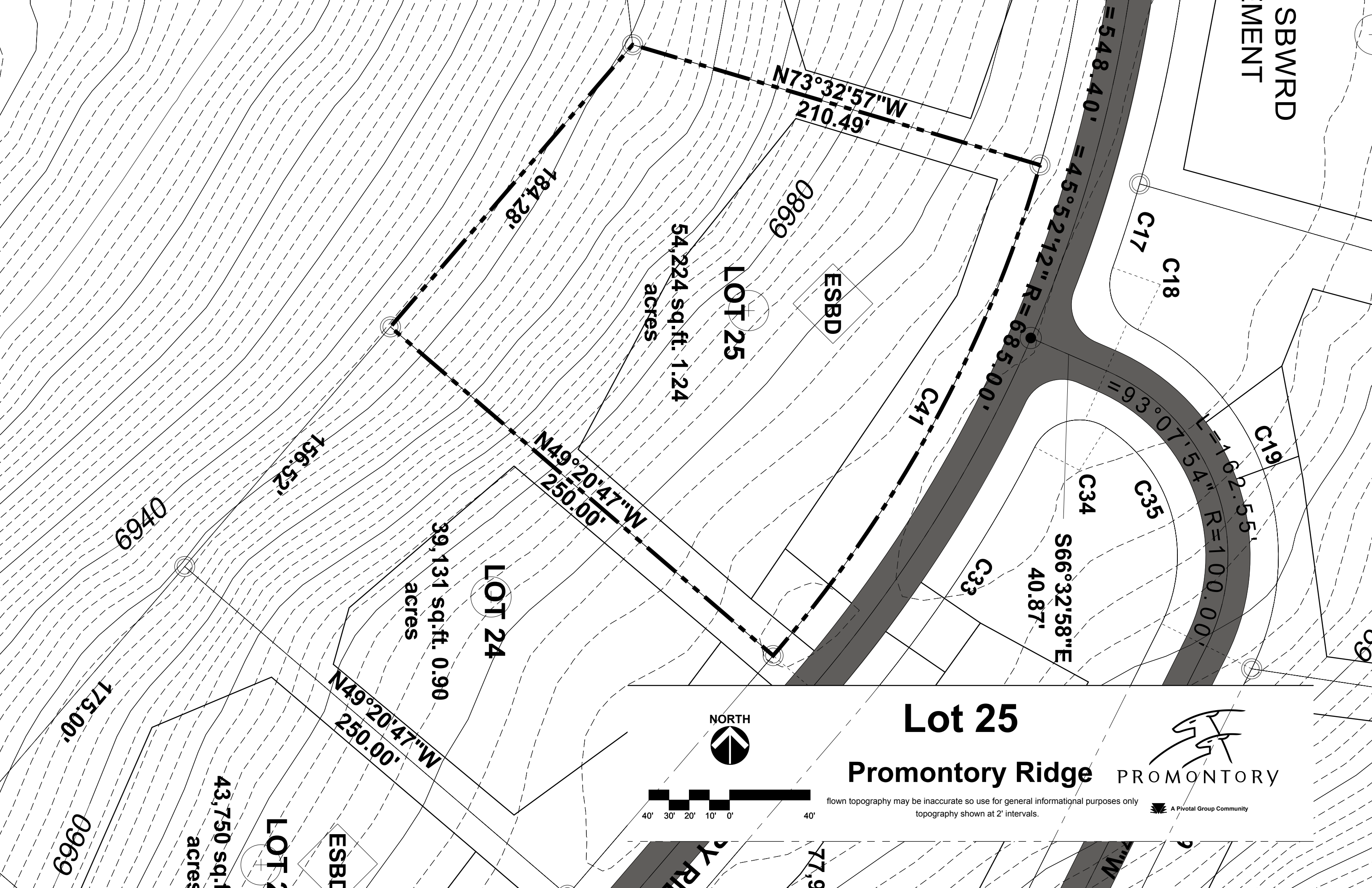


SBWRD
MENT



N73°32'57"W
210.49'

184.28'

54,224 sq.ft. 1.24 acres

LOT 25

ESBD

0869

C17

C18

=548.40'

=45°52'12" R=685.00'

C41

=93°07'54" L=102.55'

R=100.00'

C19

C34

C35

S66°32'58"E
40.87'

C33

N49°20'47"W
250.00'

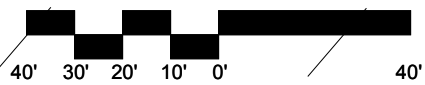
39,131 sq.ft. 0.90 acres

LOT 24

N49°20'47"W
250.00'

6940

156.52'



Lot 25

Promontory Ridge



A Pivotal Group Community

shown topography may be inaccurate so use for general informational purposes only
topography shown at 2' intervals.

43,750 sq.ft.
acres

LOT 23

ESBT

175.00'

0969

PY RLD

77.9

W