



Hello Promontory Friends and Family!

If you like Promontory's Wasatch view lots, you are going to LOVE Elk Ridge Heights!

Promontory Development is excited to announce the first NEW release of 17 BIG VIEW Wasatch Range-facing homesites in over five years! These spectacular front row lots bridge the Dye Course properties with the Nicklaus Village and are close to Promontory's newest playground: The Beach House, Saddle Lake Park and the Tubing Hill.

You may have already seen our new Elk Ridge Heights lot signage as you drive up Promontory Ranch Road straight back toward the Nick from the Equestrian Gate entrance. As we always do for our valued Promontory owners and members, we wanted to give you first look at these stunning new release lots. We also want you to be the first in, if you have an interest in more Promontory real estate. In addition to expansive Wasatch views, these lots also have gorgeous, scenic views of the Pete Dye golf course and will be priced accordingly. For your consideration, we have put together a Launch Day INCENTIVE PACKAGE.

This INCENTIVE PACKAGE will be available ONLY from May 21st through July 14th with a reservation. Our standard selling program sponsors a Social Membership and allows for a 10% rebate credit that may be used toward the purchase of a Full Membership Deposit, club dues, Conservancy dues or Conservancy design review fees, club food and beverage, classes, training or spa-related treatments, club soft goods purchases in the sports shop or golf shop, or rental cabins in our rental program. These standard options will also be in place for this launch phase. ADDITIONALLY, a 5% cash credit is in place for all buyers at the launch.

We are SWEETENING THE DEAL with an additional 5% Construction Rebate if a buyer begins construction within 2 years of closing with proof of building permit and construction contract. We are anxious to see beautiful architecture line this NEW neighborhood.

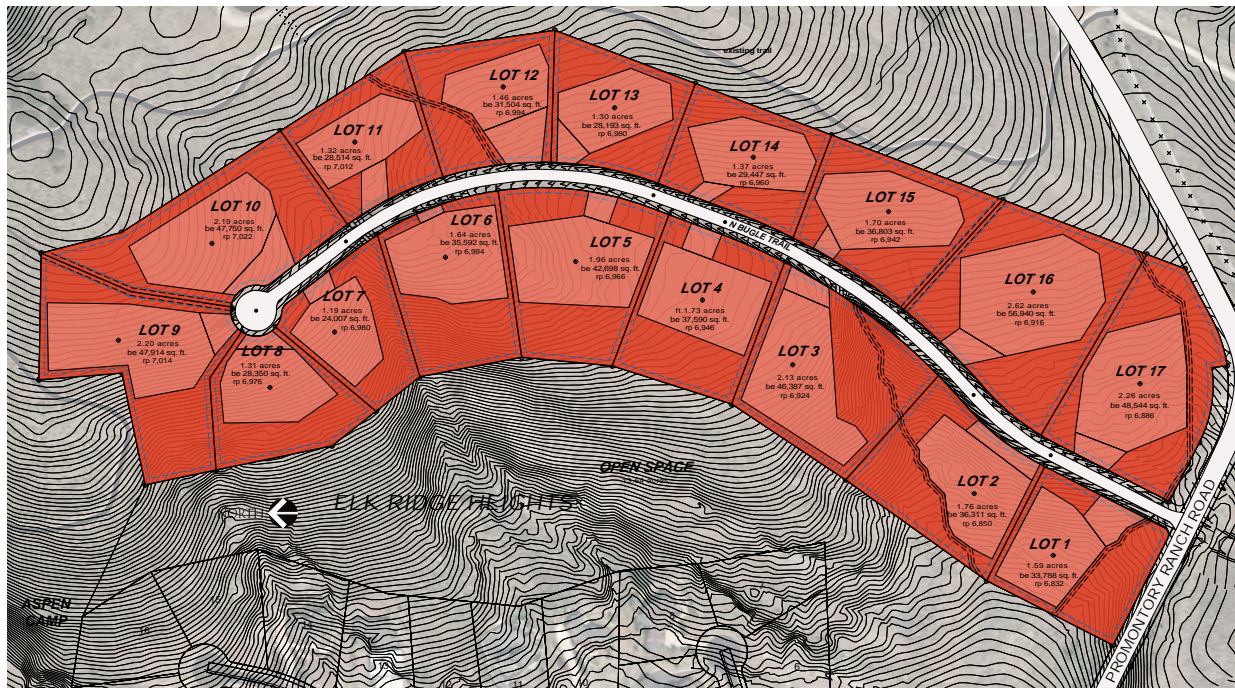
To inquire about this opportunity, please contact your Promontory Sales Executive, **Chris Messick - 435.503.6280**, who is standing by and ready to help you seize this upcoming opportunity if it is of interest. The only requirement to refer this exclusive incentive package to a Friend or Family member is an email of introduction from you to your Promontory Sales Executive, so please feel free to pass this along to anyone in your close circle who might be of interest as well.

Ready for The RIDGE?!

Robin Milne
General Manager



ELK RIDGE HEIGHTS



All information subject to change. Promotions/incentives may be subject to conditions, restrictions, and limitations. This promotional material is not intended to constitute an offering in violation of the law of any jurisdiction. Where applicable, obtain the "Property Report" or its equivalent, required by Federal and State law, for any Promontory community of interest and read it before signing anything. No Federal or State agency has judged the merits or value, if any, of any property referenced herein. No binding offer to sell may be made or accepted prior to the Public Report requirements for the property according to the respective State's real estate registration requirements. In accordance with specific state laws, lot reservations only may be currently accepted and may not currently be available for sale at this time. Material is void where prohibited or otherwise restricted by law. Final plat recording may not have occurred. Information is provided for general reference to a limited audience only and is not a representation of the content of the sales contract, offering documents, or governing documents for Promontory.

8758 NORTH PROMONTORY RANCH ROAD | PARK CITY, UTAH 84098
435.333.CLUB TELEPHONE | 888.458.6600 TOLL FREE | 435.333.4611 FACSIMILE | PROMONTORYCLUB.COM