



TRAPPERS CABINS



TRAPPERS CABINS



The Trappers Cabins offer a rustic, yet elegant style ideal for your family's vacation home. Located in the heart of Promontory, adjacent to the ninth hole of the Pete Dye Canyon Golf Course and within walking distance to the club amenities, these cabins are designed for the perfect family getaway. Stylish great rooms, comfortable master suites and cozy lofts create a classic cabin feel.

Authentic plank and chink siding, copper roof accents, artful stone facades and copper gutters characterize this genuine architectural style.

The views from the Trappers Cabins are exceptional. Many overlook the stunning Pete Dye Canyon Golf Course while others capture the breathtaking views of the Park City lights and the three ski resorts. Owners will find their Trappers Cabin the perfect four season getaway.

With three floor plans to choose from, ranging in size from approximately 2,000 to over 2,400 square feet, your ideal cabin awaits you at Promontory.



STANDARD CABIN FEATURES

Choose from three distinctive floor plans ranging from approximately 2,000 to over 2,400 square feet. Each Trappers Cabin offers a high level of standard interior and exterior features detailed below.

Inviting Great Room:

- Vaulted rustic beam ceiling
- Oversized wood-burning stone fireplace
- Large adjacent wooden rear and front porch
- Distressed wood flooring

Master of the House

Master Bedroom and Bath Features:

- Large master bedroom with adjacent wooden deck
- Slab stone counters in bathroom with under-counter mount sinks
- Stone/wood flooring in bathroom areas
- Stone/slate shower surrounds with frameless shower enclosure
- Designer faucets in selected finishes
- Custom knotty alder bathroom cabinets with multi-step finishes
- Customized walk-in closet
- Luxurious carpet in bedroom and closet

Epicurian's Delight - Gourmet Style Kitchen:

- Viking® appliances including 36" refrigerator, 36" six-burner gas range, dishwasher and microwave
- Custom knotty alder cabinetry with multi-step finishes
- Granite/travertine slab countertops
- Under-counter stainless steel culinary sink with matching satin nickel faucet

The "Mud Room" - Useful Utility Room:

- GE® stackable washer and dryer
- Stone hard surface flooring
- Granite/travertine slab countertops

A Closer Look Inside - Custom Interior Features:

- Dual pane Jeld Wen® Premium Series wood windows and French doors with metal clad exteriors and low-E glass
- Stain grade solid wood 7'4" interior doors with matching baseboards and casing
- Ashley Norton® solid bronze hardware
- Fire sprinkler and security system
- Forced-air gas heat and air-conditioning
- Professionally designed lighting package
- Structured wiring system including telephone, cable television and CAT 5 data wiring
- Kohler® sinks and water closets

First Impressions - Custom Exterior Features:

- Richly detailed rustic exteriors of stone with barn board and shake shingles or plank and chink siding
- Solid 8-foot tall knotty alder entry doors
- Mountain blend natural stone entry walkway
- Decorative iron light fixtures
- Wood paneled garage doors
- Spacious designed porches and wooden decks
- Generously landscaped yards
- Copper gutters and downspouts at specified locations
- Copper roofing accents

*Upgrade package available for each Trappers Cabin model.
Specifications subject to change without notice.*

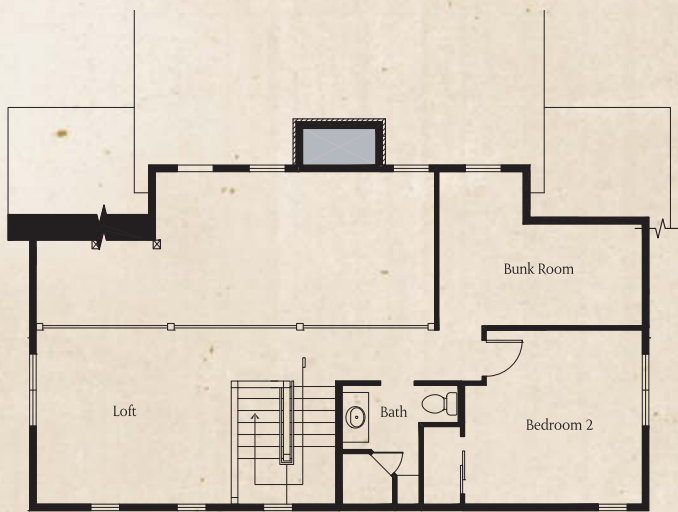
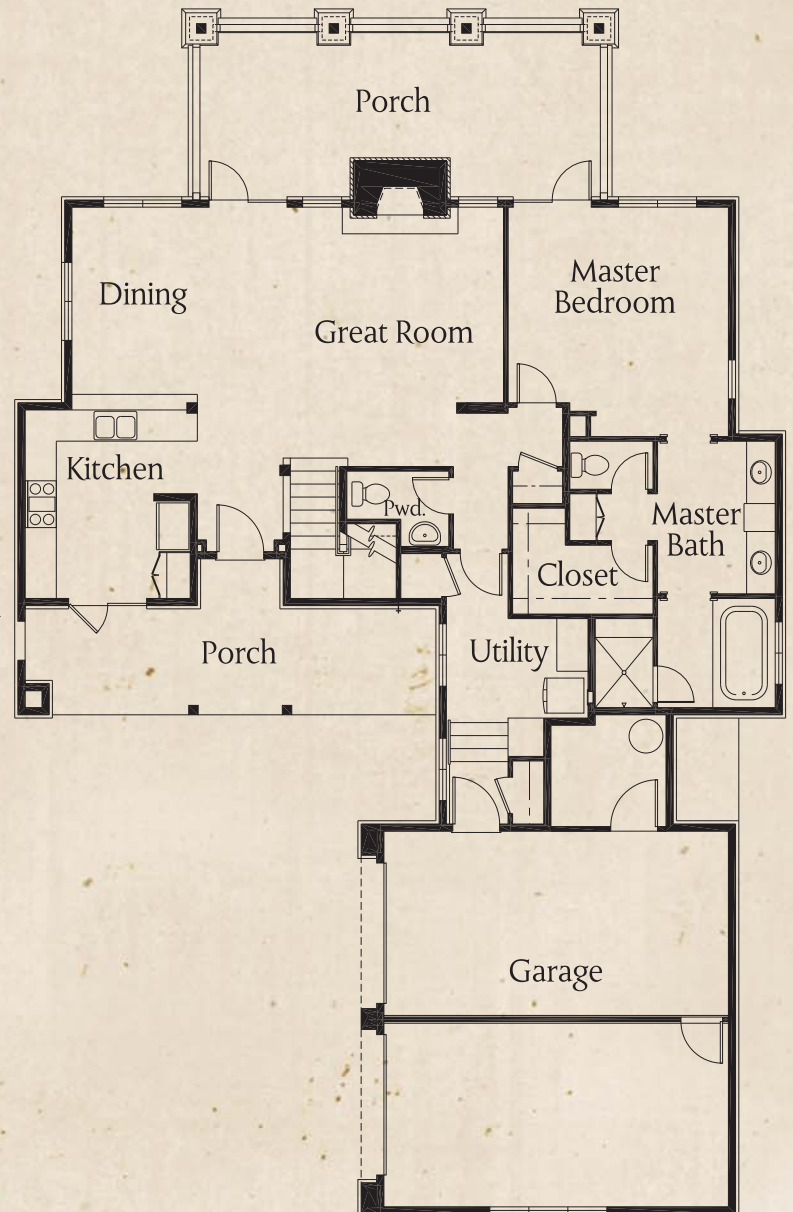
TRAPPERS CABINS SITE PLAN



THE ADAMS*



Main Level

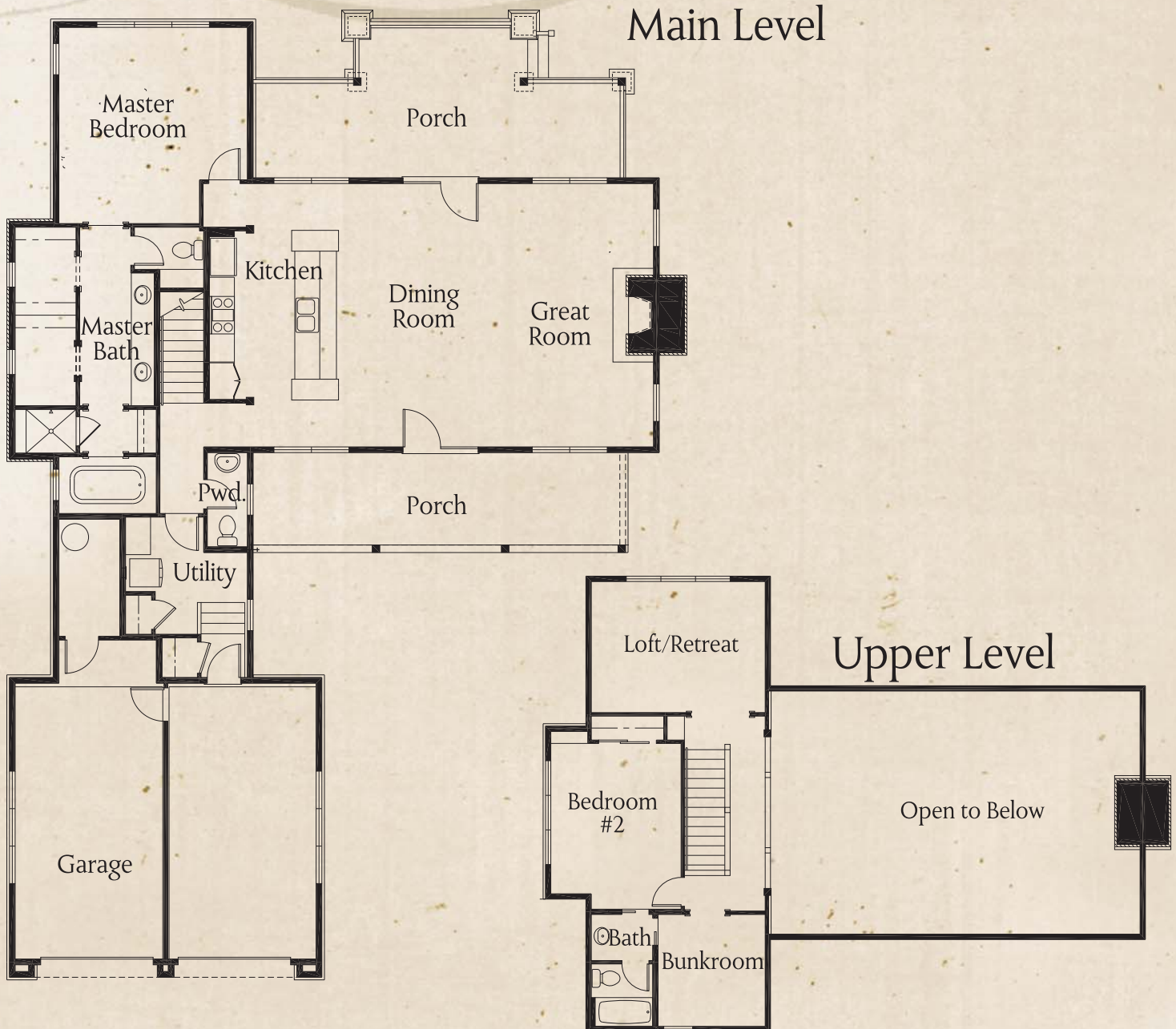


Upper Level

Approximately 2,015 Sq. Ft.

* Elevations and exterior materials may vary depending on the cabin site selected. Floor plans may be mirror imaged or reversed.

THE BRIDGER*



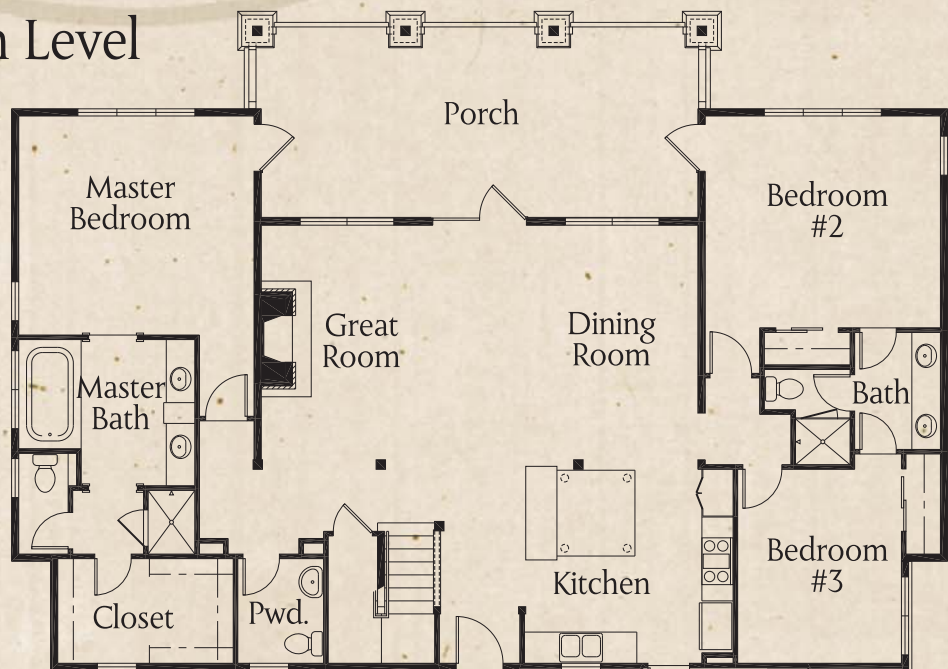
Approximately 2,214 Sq. Ft.

* Elevations and exterior materials may vary depending on the cabin site selected. Floor plans may be mirror imaged or reversed.

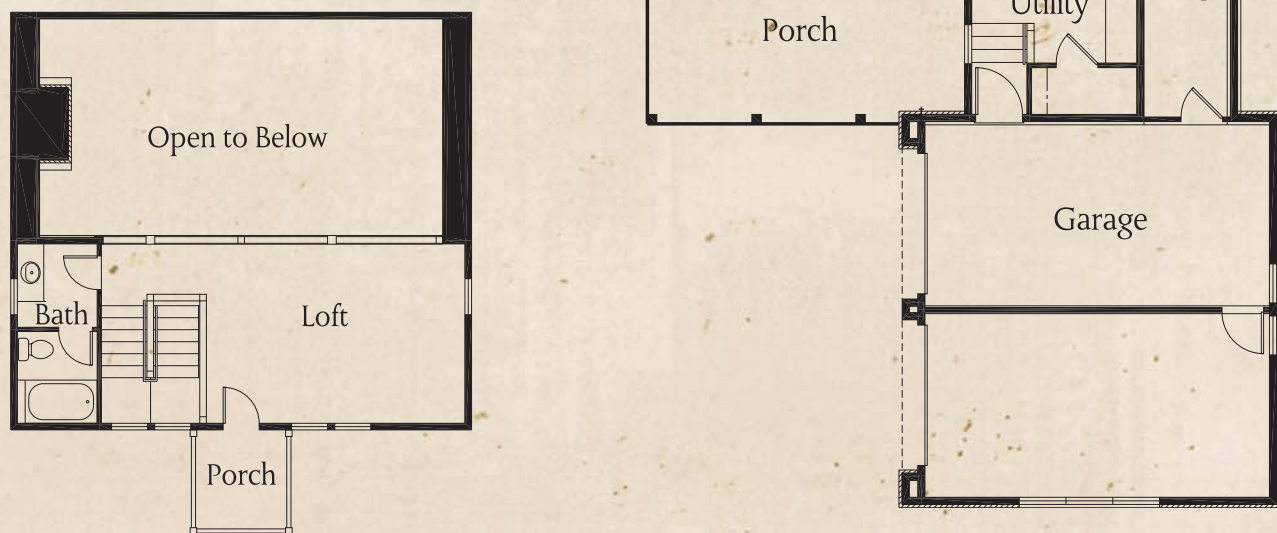
THE COLTER*



Main Level



Upper Level



Approximately 2,406 Sq. Ft.

* Elevations and exterior materials may vary depending on the cabin site selected. Floor plans may be mirror imaged or reversed.



PROMONTORY

REPRESENTED BY PROMONTORY REALTY LLC

8758 North Promontory Ranch Road

Park City, Utah 84098

435-333-4600 / 888-458-6600

Fax 435-333-4611

PROMONTORYCLUB.COM



A PIVOTAL GROUP COMMUNITY



EQUAL HOUSING
OPPORTUNITY

Obtain the property report, required by federal or state law, and read it before signing anything. No federal or state agency has judged the merits or value, if any, of this property. Warning: The California Department of Real Estate has not inspected, examined or qualified this offering. Promontory is a private facility. All proposed golf courses, clubhouse facilities and other described recreational facilities are part of Promontory and purchase of memberships and payment of applicable fees are required for use of individual facilities. Prospective members interested in the Ranch Membership, the Golf Membership or the Equestrian Membership must review the complete membership documentation (including the Membership Plan, the Rules and Regulations and the Membership Agreement) prior to the purchase of a developer lot or home. This publication should not be considered as a solicitation in states where registration is required as a condition to the solicitation, offer or sale of real estate, but where registration has not occurred.

Plans, elevations, specifications, features, colors, designs, dimensions and materials are all subject to availability, and to change or substitution at any time and without notice. Plans are only for illustrative and conceptual purposes, are not to scale and may be the reverse (mirror) image of those shown. All measurements are approximate and may vary from those shown as a result of, among other things, construction materials, construction practices, and field conditions. Illustrations of elevations and floor plans are artists' depictions only. In production, plans and elevations may vary in precise details and dimensions, and may not actually be constructed as shown. Landscaping depicted is not to scale and may vary as to type, maturity, location and number. In addition, some features shown in the model cabins may not be included in the purchase price of the cabins as quoted. Site plans are for illustrative and conceptual purposes only and are subject to change without notice. Please consult your sales executive and refer to the purchase documentation in order to determine which features, specifications, floor plan and elevation are included on any cabin homesite you purchase.

Promontory facilities described herein are proposed and no warranty is given or implied that such improvements will be commenced or completed. The artistic renderings of the proposed club and Conservancy facilities are provided for informational purposes to illustrate the general architectural character of proposed amenities. The developer reserves the right to either eliminate entirely or modify the elevation, size, specification, timing, precise siting, parking areas, and other elements or other features of proposed amenities that are undertaken, whether through the course of design or construction, pending their completion. The developer also reserves the right to modify the privileges associated with the various types of memberships in Promontory; including the terms on which such memberships may be offered to purchasers of lots or homes within Promontory. Club personnel are subject to change without notice. © 2007 Pivotal Promontory Development, L.L.C.